

# Daily Weather Update

## Coastal Area Around The Sri Lanka

Information Fusion Center-Colombo



Information Fusion Center  
Colombo  
Sri Lanka

Date 2026.01.29



# **WEATHER FORECAST FOR SEA AREAS AROUND THE ISLAND DURING NEXT 24 HOURS**

**Issued at 05.30 a.m. on 29 January 2026**



**DEPARTMENT OF METEOROLOGY  
SRI LANKA**

# CONDITION OF THE RAIN

Mainly fair weather will prevail in the sea areas around the island

# WINDS

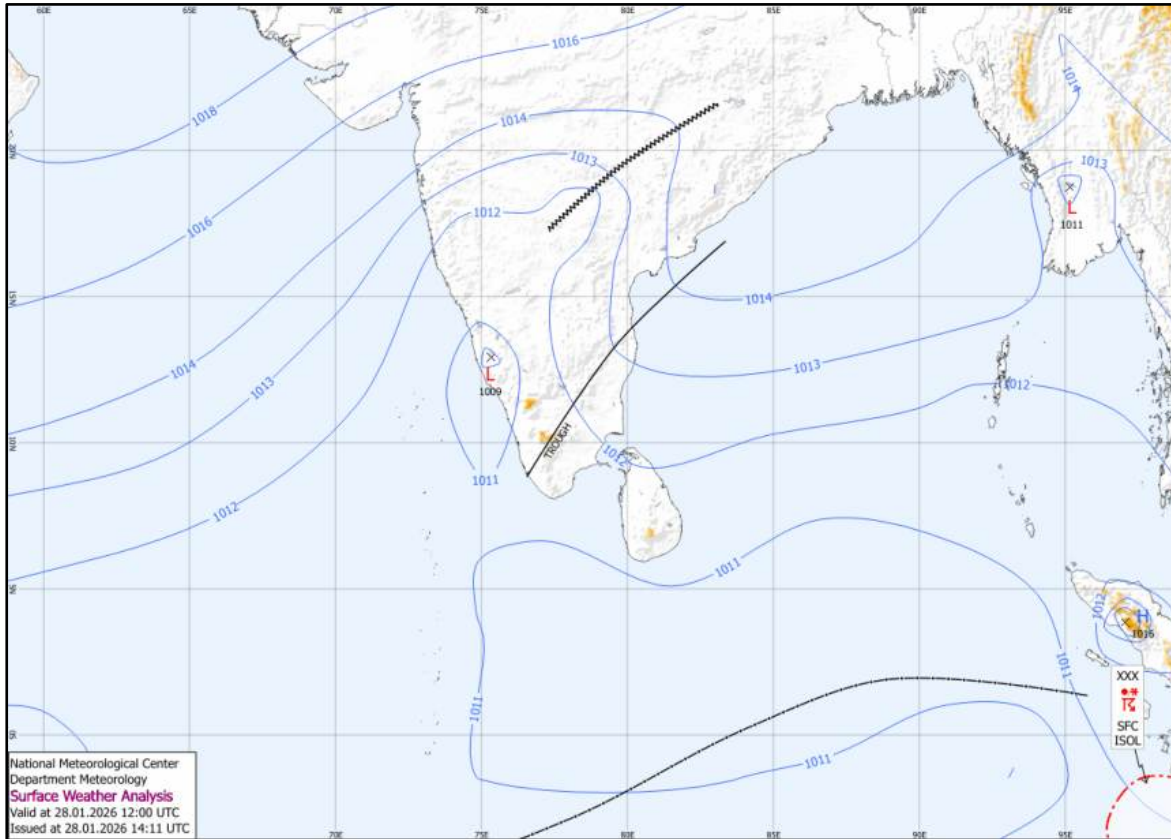
Winds will be north-easterly and wind speed will be (30-40) kmph. Wind speed can increase up to (45-50) kmph at times in the sea areas off the coast extending from Kalutara to Mannar via Colombo and Puttalam, and from Matara to Pottuvil via Hambantota.

# STATE OF SEA

The sea areas off the coast extending from Kalutara to Mannar via Colombo and Puttalam, and from Matara to Pottuvil via Hambantota will be fairly rough at times.

Other sea areas around the island will be moderate.

# SURFACE ANALYSIS CHART



29-Jan-26

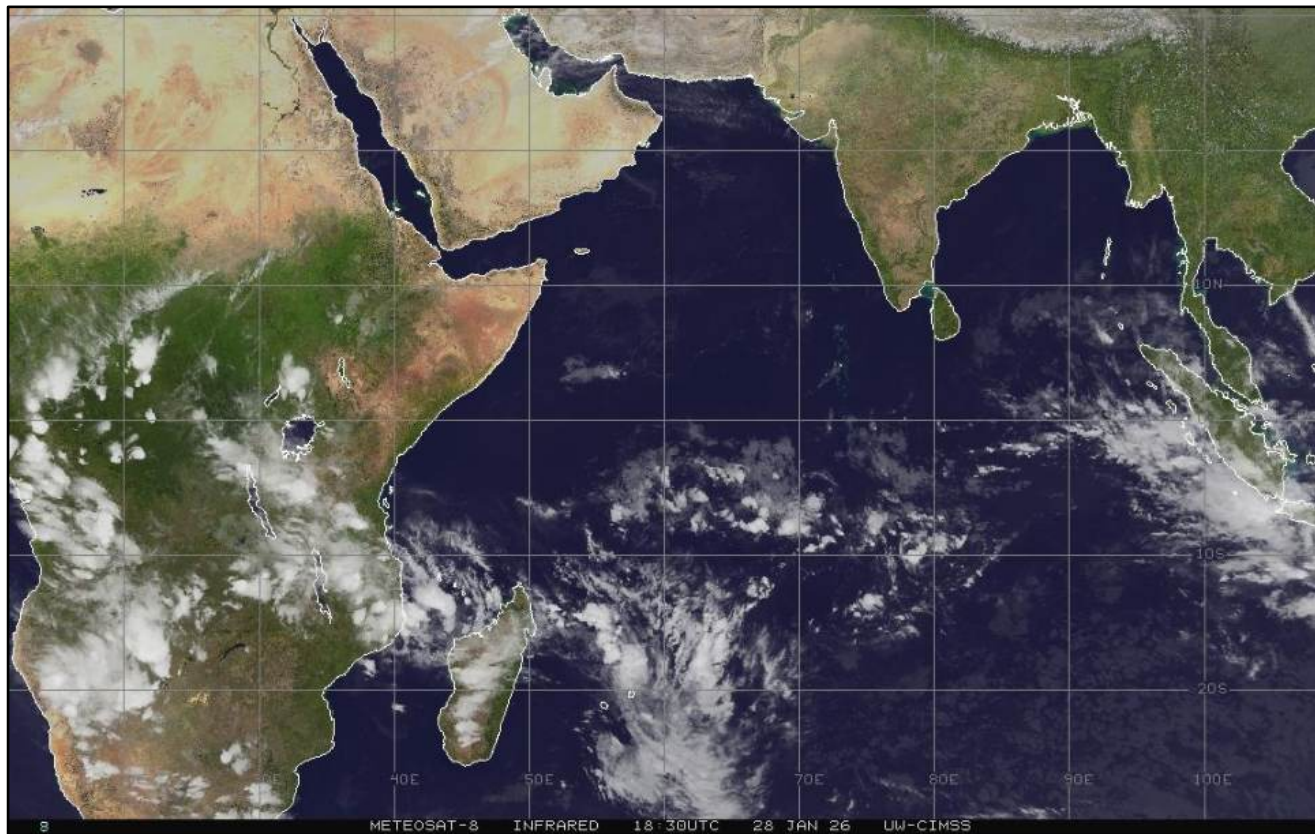
IFC -Colombo

This analysis charts show the surface pressure pattern over Sri Lanka and the surrounding area. They display isobars (lines of equal pressure) and indicate areas of high (H) and low pressure (L) along with their central pressure value. Isobars are represented by solid blue lines, spaced every 1 hPa. High pressure is usually associated with mainly dry, settled weather with light winds, while low pressure is normally associated with unsettled weather, which is often wet and windy. The lower the pressure, generally the stronger the winds and the heavier the rain.

The map shows Coordinated Universal Time (UTC) and the local time is UTC+5.30..



# SATELLITE IMAGE



29-Jan-26

IFC -Colombo



Information Fusion Center  
Colombo  
Sri Lanka

# THANK YOU

The Officer Incharge  
Information Fusion Centre - Colombo  
Naval Headquarters, Colombo, Sri Lanka  
+94 11 719 480 6  
+94 74 120 4829  
[ifc@navy.lk](mailto:ifc@navy.lk)  
[ifc.cbo@gmail.com](mailto:ifc.cbo@gmail.com)